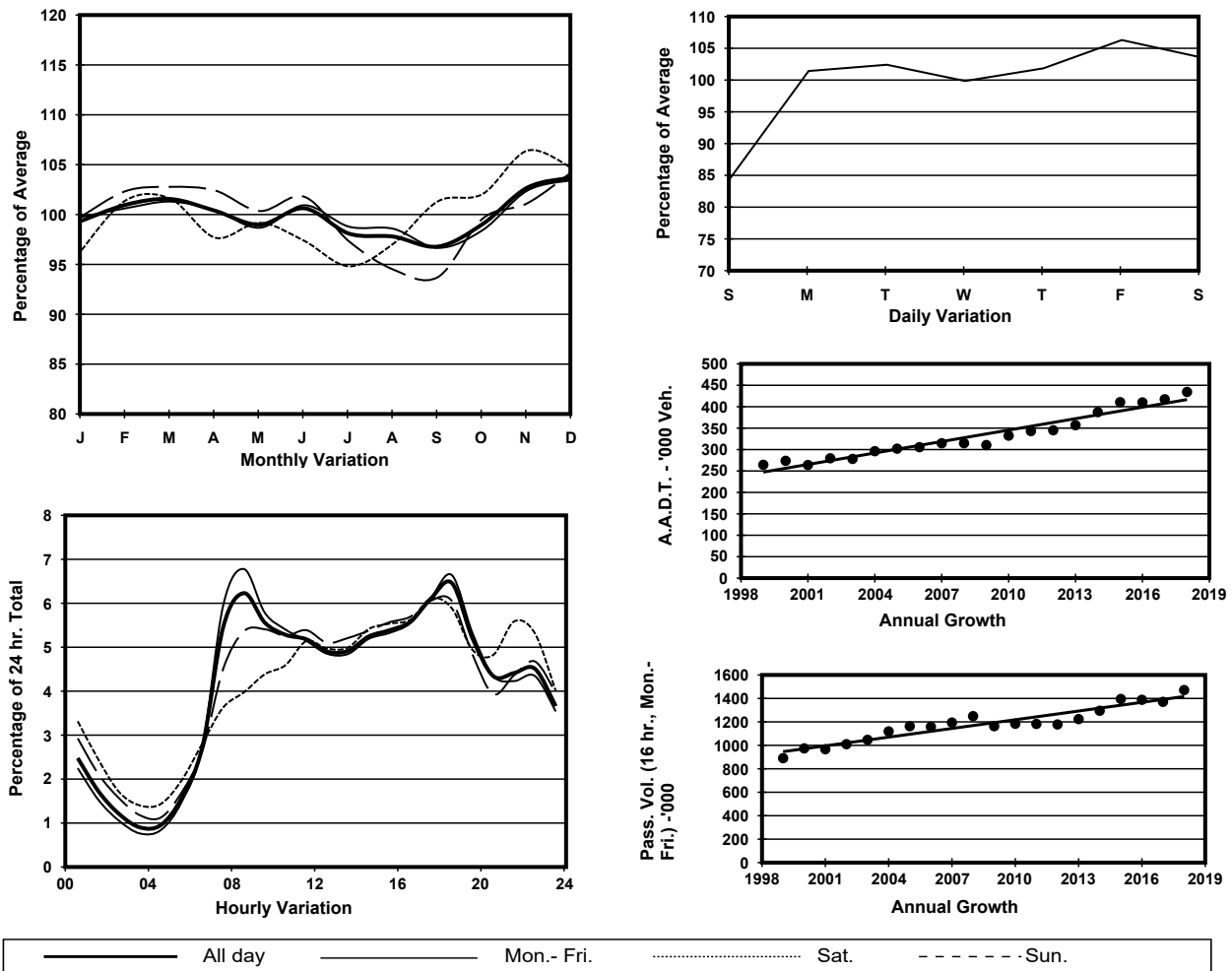


YEAR 2018

Location Tsing Yi External Cordon(Tsing Yi Area Boundary)

Stations on Cordon/Screenline 5018, 5027, 5033, 5034, 5038, 6219 and 6221

1. TRAFFIC FLOW VARIATION AND GROWTH



2. TRAFFIC CHARACTERISTICS (BY DIRECTION)

Parameter	All - Day	Mon. - Fri.	Sat.	Sun.
IN BOUND				
A.A.D.T.	212510	219480	221000	181640
R 12 / 24 - %	65.9	67.4	63.9	59.2
R 16 / 24 - %	84.8	85.9	82.4	80.6
AM Peak Hour	0800-0900	0800-0900	0800-0900	0900-1000
One-way flow at AM peak hour	13000	14680	11680	7480
T - % (AM)	-	20.7	-	-
PM Peak Hour	1800-1900	1800-1900	1800-1900	1700-1800
One-way flow at PM peak hour	14180	15110	13810	11610
T - % (PM)	-	17.2	-	-
Prop.of commercial vehicles - 16 hr.	-	21.4	-	-
OUT BOUND				
A.A.D.T.	221930	228950	232670	189020
R 12 / 24 - %	66.7	67.8	66.1	61.2
R 16 / 24 - %	84.8	85.7	83.2	81.2
AM Peak Hour	0800-0900	0800-0900	0900-1000	0900-1000
One-way flow at AM peak hour	14070	15710	12940	8770
T - % (AM)	-	19.3	-	-
PM Peak Hour	1800-1900	1800-1900	1700-1800	1800-1900
One-way flow at PM peak hour	13900	14670	14090	11130
T - % (PM)	-	18	-	-
Prop.of commercial vehicles - 16 hr.	-	21	-	-

3. OTHER INFORMATION AND COMMENT

Tsing Yi External Cordon
Year 2018

4. Vehicle classification and occupancy - Monday to Friday

Time		Class of vehicle									
		Motor Cycle	Private Car	Taxi	Private LB	PLB	Goods veh.		Non Fr. Bus	Fr. Bus	
							Light	M & H		SD	DD
0700-0800	Pro	2.8	40.9	19.7	0.8	1.5	14.5	11.3	4.2	0.1	4.3
	Ocp	1.0	1.4	2.1	6.6	12.5	1.5	1.1	21.8	13.3	55.8
0800-0900 Peak Hour	Pro	2.3	44.6	16.7	0.6	1.2	14.7	11.7	4.3	0.1	4.0
	Ocp	1.1	1.3	2.1	6.0	12.8	1.5	1.2	20.6	22.9	62.1
0900-1000	Pro	1.5	36.9	15.7	0.6	1.2	21.8	15.4	3.0	0.1	3.9
	Ocp	1.0	1.4	1.9	2.2	11.9	1.5	1.2	13.1	14.0	35.2
1000-1100	Pro	1.2	33.6	16.6	0.5	1.0	22.0	18.5	2.7	0.1	3.9
	Ocp	1.1	1.4	2.3	4.5	10.9	1.4	1.2	13.6	1.0	29.2
1100-1200	Pro	1.4	35.0	15.9	0.7	1.3	21.1	18.1	2.7	0.1	3.9
	Ocp	1.1	1.5	2.3	2.4	8.8	1.4	1.1	17.2	1.0	28.3
1200-1300	Pro	1.4	36.3	16.4	1.0	1.2	18.9	17.5	3.2	0.1	4.1
	Ocp	1.1	1.5	2.2	4.7	9.4	1.4	1.1	13.9	1.0	28.3
1300-1400	Pro	1.1	34.6	16.4	0.5	1.3	20.3	18.8	2.9	0.0	4.0
	Ocp	1.1	1.4	2.2	2.5	10.2	1.4	1.2	13.2	0.0	31.2
1400-1500	Pro	1.2	36.7	15.0	0.7	1.1	20.9	17.7	2.9	0.0	3.7
	Ocp	1.1	1.5	2.2	2.1	11.1	1.4	1.2	10.3	0.0	28.5
1500-1600	Pro	1.2	33.5	17.0	1.0	1.2	21.6	17.6	3.2	0.1	3.8
	Ocp	1.1	1.5	2.2	4.5	11.6	1.4	1.1	13.1	6.2	27.5
1600-1700	Pro	1.3	36.4	16.2	1.0	1.1	20.2	15.6	4.2	0.1	3.9
	Ocp	1.1	1.5	2.0	5.3	12.8	1.5	1.1	13.8	9.3	35.5
1700-1800	Pro	2.8	40.7	15.4	0.7	1.2	18.3	12.4	4.2	0.1	4.1
	Ocp	1.1	1.5	2.2	3.5	13.7	1.5	1.1	14.7	28.7	46.6
1800-1900	Pro	2.5	51.5	14.0	0.2	1.2	12.9	8.9	4.2	0.1	4.4
	Ocp	1.0	1.4	2.2	1.9	15.8	1.4	1.1	20.0	23.3	62.0
1900-2000	Pro	2.0	52.1	17.0	0.1	1.4	10.1	7.7	4.6	0.1	5.1
	Ocp	1.1	1.3	2.0	3.9	12.7	1.3	1.1	23.5	19.0	50.9
2000-2100	Pro	2.0	45.8	23.2	0.1	1.6	9.8	8.7	3.9	0.1	5.0
	Ocp	1.1	1.3	2.0	3.6	10.5	1.3	1.1	10.9	6.0	36.6
2100-2200	Pro	1.8	47.0	25.9	0.1	1.7	7.5	8.0	2.6	0.1	5.4
	Ocp	1.2	1.5	2.0	2.3	10.2	1.3	1.1	11.0	7.7	34.1
2200-2300	Pro	1.7	48.4	28.4	0.1	1.4	6.2	6.7	1.9	0.1	5.2
	Ocp	1.1	1.4	1.9	2.0	10.2	1.2	1.0	10.5	13.6	35.0
16 hours	Pro	1.8	40.9	17.7	0.6	1.3	16.5	13.4	3.5	0.1	4.3
	Ocp	1.1	1.4	2.1	4.1	11.7	1.4	1.1	16.1	13.5	40.6

Legend

Pro. Proportion of vehicles in % (Sum may not add up to 100% due to figure rounding)*

Ocp. Average occupancy of vehicles including both driver and passengers*

M&H Medium and Heavy

***** All traffic data are collected from combined bounds except for one way traffic